

The Force Group offer a fully comprehensive range of products and complementary services, for Valves, Controls & Instrumentation, Heat Exchangers and Pump solutions. We have four companies under The Force Group, each with a technical focus on specific products within industry, with the aim of fully aligning ourselves to what our customers are needing: dedicated expertise and cost-effective solutions to help them on or off site. The skills within our group means we can provide a single point of contact for a complete project. We are based centrally in Solihull, West Midlands.

Welcome to the team



We are delighted to welcome the following people to our team

Paul Ashley has re-joined the Valveforce team as our Sales Manager. Paul is well versed in our product and engineering service portfolio and has valuable experience in customer account management across multiple sectors. Paul is here to support you with your Valve requirements – please call him on 0121 711 1908 or email pashley@valveforce.co.uk.



Juan Kiriluk has joined the Controlsforce team as a Control Panel Technician. Juan has a wealth of knowledge in electrical assembly, prototype design and commissioning activities. His experience of electrical manufacturing will add to our highly skilled workforce.



Chris Nally has joined the Heatxforce team as a Fabricator/Welder. Chris has many years of experience, having worked in the welding industry since 1999. His fabricator and welding skills will be a huge asset to our experienced team.

Do you have any outstanding projects you need help to complete?

Don't panic if you have several outstanding projects that need completing, you can rely on us to help as an extension to your team.

Call us on 0121 711 1908 or email info@valveforce.co.uk to discuss your requirements.



We're hiring for a Technical Sales Engineer and Control Panel Technician

As a specialist and fast-growing company, we know that talented people are essential to maintaining our future success. We are currently recruiting for a Technical Sales Engineer to support our ever growing customer base within Valveforce and an experienced Control Panel Technician to join the Controlsforce team.

For further information and to apply, please visit www.theforcegroup.co.uk/careers



Expert Energy and Flow Control Solution Specialists

- Steam and hot water condensate specialists
- Control valve experts
- Steam trap management
- Boilerhouse upgrades and compliance



Industrial Instrumentation and Controls Engineering

- Designers and builders of control panels
- Instrumentation and software experts
- PLC & HMI programming
- Industrial instrumentation repair



Heat Transfer packages, HVAC Coils & Calorifiers

- Plate heat exchanger packages
- Calorifiers, coil design and fabrication
- Mechanical installation services
- On and off-site repairs and maintenance



Latest Solutions in Industrial Pumping Technologies

- Condensate recovery packages
- Packaged booster sets
- Pressurisation units
- Distributor of leading brands



15

ANNIVERSARY

Happy 15th Birthday Valveforce

Marc Bozdogan set up Valveforce Ltd 15 years ago from his spare room in London. The business originally sold valves online, but Marc noticed customers also needed technical support. The business changed from purely sales to offering a technical and customer support function, which resulted in rapid growth. In 2011 Valveforce moved to their first business premises in Solihull and since then we have moved twice more to upscale and grow the warehousing and business premises.

The Force Group of Companies (Valveforce, Controlsforce, Heatxforce and Pumpforce) are now based in our 7000ft² head office, which is also home to our external sales and services engineers, with a dedicated distribution warehouse and controls & automation workshop.

We can save you money, reduce your carbon footprint and ensure your traps are working at maximum efficiency!

With energy prices rising, we are here to help our customers eliminate steam losses and recover valuable energy, helping them to make significant savings as winter sets in.

A Valveforce Steam Trap Survey involves a detailed inspection of your condensate return system and includes:

- Identification and an inventory of the complete steam trap population
- Independent checking of each steam trap to ensure that it is correct for the application
- Visual inspection of each steam trap to check that it is installed correctly
- The latest ultrasonic testing of all steam traps in operation
- Highlight other issues that may be observed in your steam and condensate system
- Generation of an independent report as a result of the steam trap survey

Our Steam Trap Survey will also ensure that your traps are working at maximum efficiency and identify any safety issues with recommendations in a detailed report.



“ SAVE MONEY: Just one passing 15mm Thermodynamic steam trap will cost in the region of £750 per year in live steam loss! ”



Prevent scalding from overheated hot water with a High Temperature Safety Survey

As the weather gets colder, it is imperative that your hot water maintains a safe constant temperature to avoid the risk of scalding.

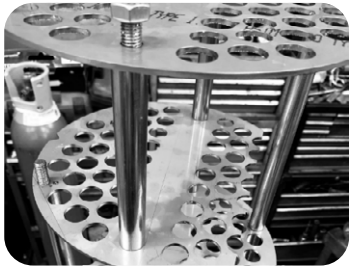
During our survey we carry out a complete inspection of the control systems, valves and actuators, with the findings detailed in a report. Using the very latest test equipment, Valveforce are able to independently test all of the leading manufacturer's high limit protection valves and thermostats in your plant room and prove they are tripping at the critical temperature set point.

Implementing our High Temperature Safety Survey into your planned preventative maintenance (PPM) programme, will give you peace of mind during the winter months. This will ensure all equipment is working at the recommended set point helping to prevent dangerous situations occurring.



Heat Transfer Packages and Fabrication - Experts in Design, Supply & Installation

With over 30 years of heat exchanger knowledge and experience, Heatxforce deliver a one-stop solution for all your heat transfer and heat exchanger requirements from concept to commissioning.



Calorifier specialists

Designing and manufacturing heating Calorifiers is core business for Heatxforce. We provide new-build and installation, re-tubing and bundle replacement, crop backs and new plates. The calorifier can be bespoke and designed and built for a specific application. However, we also carry out extensive repair work and upgrades e.g., replacement tube bundles, re-tubing, shells and channel replacement, plugging and repairs, insurance preparation and remedial works. As well as insurance inspection preparation and any remedial work.

Avoid unexpected and costly Plate Heat Exchanger breakdowns

Our Plate Heat Exchanger service package ensures a high level of care for our customers. We will provide you with a specialist maintenance programme, that ensures your system is running at its best and help to minimise costly downtime. We can be proactive in preventative maintenance to ensure optimum performance for your plant room.

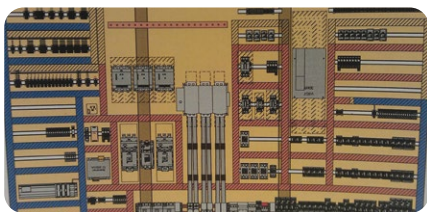


To discuss your heat exchanger requirements, call Darren on 0121 740 0130 or email dsheridan@heatxforce.co.uk



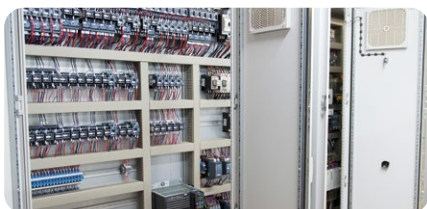
Bespoke Control Panels

Our team of specialist engineers have over 30 years' experience. We are experts in the design, manufacture and commissioning of bespoke control panels and systems from start to finish.



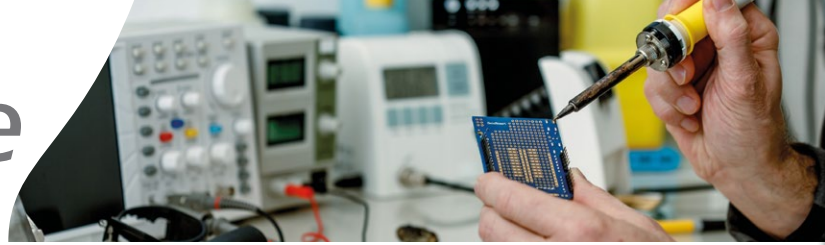
Control Panel Designers: All projects begin with us discussing the customers' requirements. This involves the design and build of a control panel, as well as understanding the key elements of the system that is to be controlled. We offer simple control systems or custom-made unique solutions, tailored for specific needs. We ensure that the optimum solution is produced.

Control Panel Manufacturers: Our control panel components are laid out within the panel to provide voltage and signal segregation. We are specialists in: Temperature Control; Conveyor Control; Remote Control/Alarm; Hydrostatic Control; Pneumatic Control; Treadmill Control; Lighting Control; Boiler Control.



Highest Quality Standards: All our control panels are built to the highest standard and are rigorously tested mechanically and electrically. This ensures reliability and durability over the lifetime of the control panel. All panels are cleaned, photographed, and documented, before being carefully packed for shipment. We log and store all test results for future reference.

To discuss your control panel requirements, call David on 0121 783 8676 or email dhennessy@controlsforce.co.uk



Industrial pump experts

Our engineers and technicians provide the latest solutions in pumping technologies from concept to commissioning. We offer a full range of products and services, from bespoke design through to the supply and installation of water pressurised systems. We have established a reputation for providing expert solutions to complex pump problems.

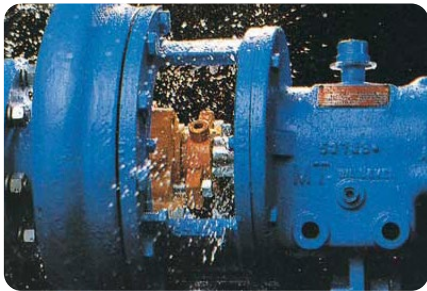
We provide the latest solutions in industrial pumping technology

We supply, install, service, repair and distribute:

Condensate Recovery Pumps
Boiler Feed Pumps
LTHW Shunt Pumps
Packaged Pressurisation Units
Prefabricated Booster Sets

Variable Frequency Drives
Pump Control Panels
Pressure Transducers
Water Pump Switch

Break Tanks
Mechanical Seals
Pump Bearings
Pump Skids



Save time and money with our Planned Preventative Maintenance (PPM) programmes

Our engineers are experts in diagnosing problems, troubleshooting equipment and implementing effective solutions. We believe that prevention is key, hence our planned preventative maintenance programmes are an integral part of our service offering. By regularly inspecting and maintaining your equipment, we can identify potential issues before they escalate into emergencies, thus avoiding unplanned downtime, so saving you time and money.

Our service covers:

Inspect and test

Pumps / Transducers /
Gauges / NRV
PRVS / Pressure Switches
(recalibrate if needed)

Pressurisation Units

Sealed Heating
Chilled Water Systems

Coldwater Booster Sets

Drain and Recharge

Air Cushion:

Expansion Vessels
Accumulator

We provide a full-service report, which details the work undertaken and highlights any faulty components. This gives the end user the information needed to make an informed decision on whether to repair or replace equipment. If a fault has been highlighted, we will provide a competitive price quotation for a speedy resolution.

By choosing to protect your pumps with a service agreement, it guarantees systems run efficiently which increases the life expectancy of equipment and helps to minimise costly downtime.

To discuss your pump requirements, call Jonathan on 0121 461 6600 or email jfield@pumpforce.co.uk

Get in touch!

The Force Group

Valveforce

Controlsforce

Heatxforce

Pumpforce

www.theforcegroup.co.uk

[/valve-force](http://valve-force)

[/controls-force](http://controls-force)

[/heatx-force](http://heatx-force)

[/pump-force](http://pump-force)

info@theforcegroup.co.uk

info@valveforce.co.uk

info@controlsforce.co.uk

info@heatxforce.co.uk

info@pumpforce.co.uk

0121 711 1908

0121 711 1908

0121 783 8676

0121 740 0130

0121 461 6600



Webchat available 0800 - 1630 Monday - Friday



[/company/the-force-group-ltd](https://www.linkedin.com/company/the-force-group-ltd)